

Simplified Return on Investment for the Packing Industry

A&D Inspection delivers checkweighing and metal detection solutions that allow production and manufacturing facilities to maintain high quality across all product lines.



This ensures businesses and their customers experience the same consistent quality in...



Every sip of soda



Bite of nutrition bar



Spoonful of yogurt



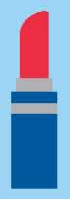
Hand pump of lotion



Canister of vitamins



Weight of specialty coins



Tube of lipstick

But where are the places ROI can be found in the product inspection processes of packaging? Let's look closely at the manufacturing process for yogurt to find out.



Raw materials + transport = High probability around contamination.

PRODUCT

INSPECTION

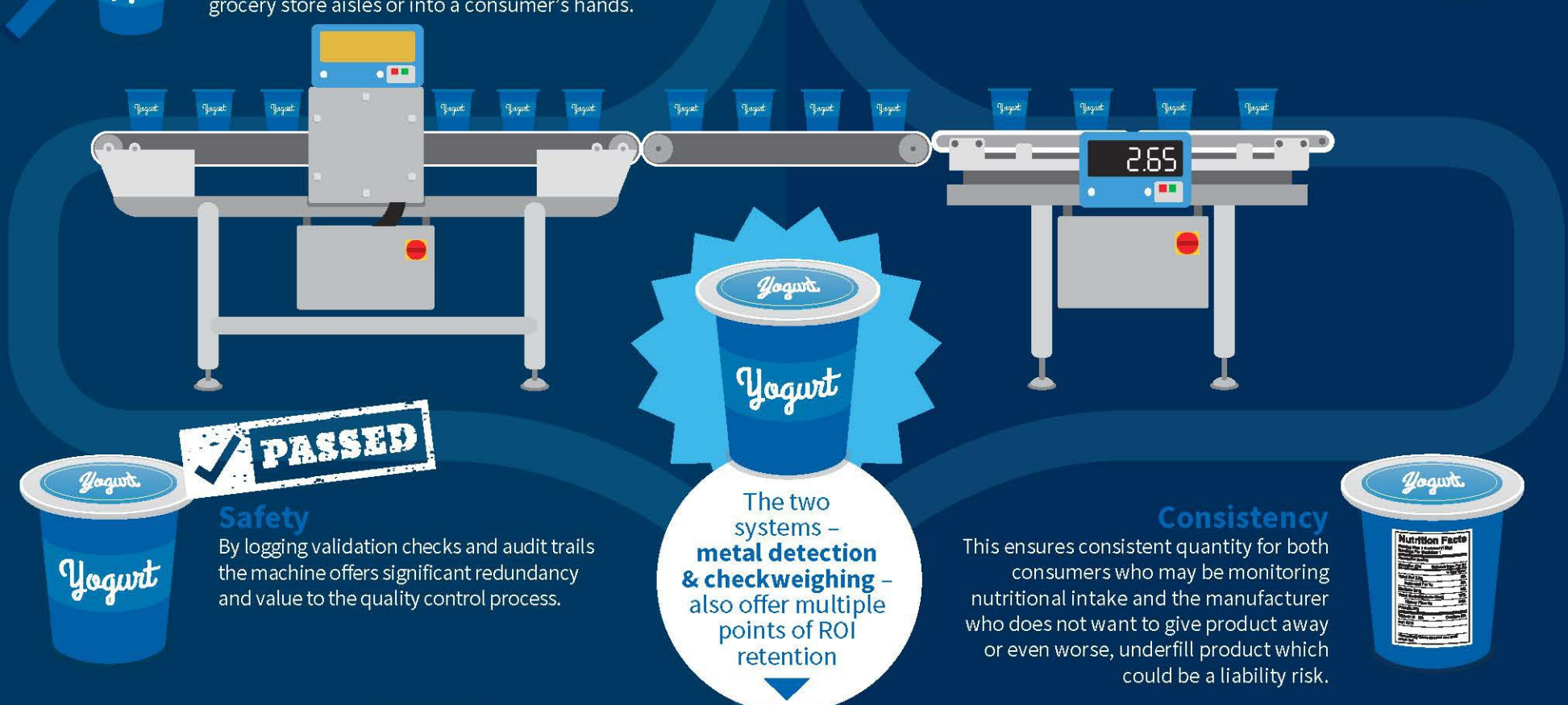


Metal Detection

As yogurt rolls through the assembly line, contaminants such as metal pieces can be detected by the phase tracking function. This ensures dangerous contaminants never make it to grocery store aisles or into a consumer's hands.

Checkweighing

As yogurt containers continue through the assembly process, containers that are even slightly over- or under-weight are identified and rejected from the assembly line.



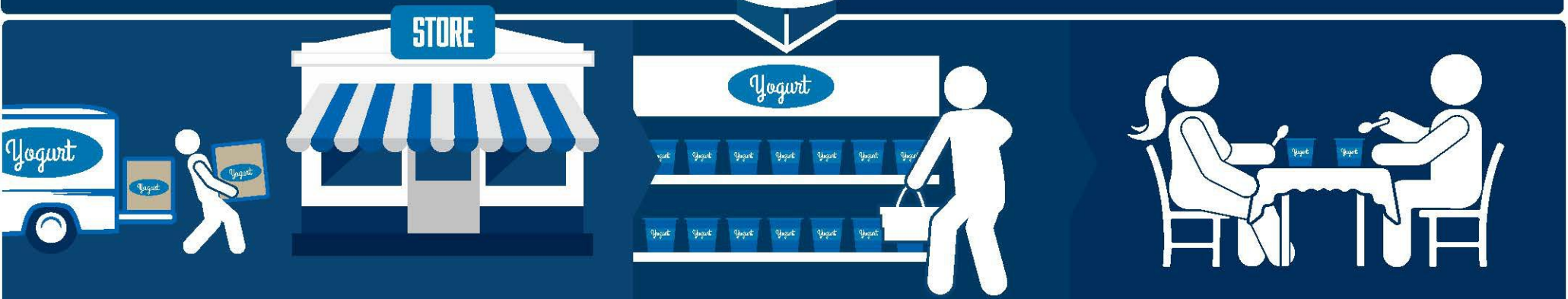
Safety

By logging validation checks and audit trails the machine offers significant redundancy and value to the quality control process.

Consistency

This ensures consistent quantity for both consumers who may be monitoring nutritional intake and the manufacturer who does not want to give product away or even worse, underfill product which could be a liability risk.

The two systems – metal detection & checkweighing – also offer multiple points of ROI retention



Modular Equipment makes for easy **INSTALLATION, CLEAN-UP & REPAIR**, to eliminate down time on the assembly line.



Simplified User Interface with 7-inch touchscreen and streamlined packet reporting.

For more Information, visit:
www.andinspection.com

